



COOLPOINT™

DELIVERING. INNOVATION

Cold Chain Solutions



More than engineering we are about
innovative partnerships

INTRODUCTION

Polyurethane (PU) foam is used in PU sandwich panels. The rigid polyurethane foam is favorable for the manufacturing of refrigeration and cold storage panels due to its advantageous mechanical, chemical, biological and moisture properties. Not limited to Refrigeration industry PU panels has numerous application in Prefabricated Building Industry.

Advantages of PU Foam

- Food grade compliance
- Superior thermal performance
- Moisture and corrosion resistance
- High density mechanical strength
- Fire retardant
- CFC free

Available in any ask able sizes.

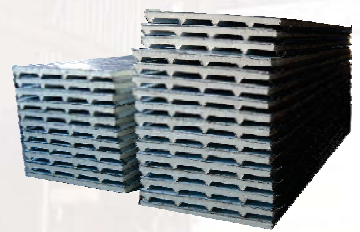
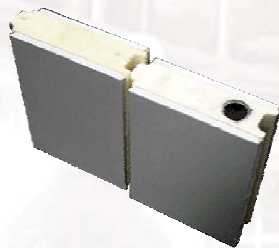
Insulation performance for PU panels is high even with a modest material thickness. Air and water cannot be penetrated and circulated within the panel walls, which provides better insulation and allows installation in all weather conditions.

PU panels are particularly suitable for wall and roof applications, due to their significant structural strength. In the event of fire, the foam does not drip or run, minimizing its flammable mass and preventing further flames from spreading.

Polyurethane panels are highly customizable. We have a range of core thickness, support finishing and panel joints to choose from. The panels can be assembled by vertical or horizontal disposition and are suitable for interior and exterior applications.

PU Features

- Excellent insulating efficiency
- Easy installation and maintenance
- Aesthetically pleasing
- Durable



Specifications (P.U)

| | |
|------------------|--|
| Dimension | 1150 mm width x any desired length |
| Thickness | 50 mm / 75 mm / 100 mm / 125 mm / 150 mm |
| Weight | Varies in accordance to thickness |
| Skins | Standard Steel 0.36mm / 0.45mm / 0.5mm / 0.6mm / 0.7mm thick 350g/m ² nominal zinc coating Paint of polyester, silicone modified polyester Colours: white (Other colours and finishes available*) Steel* Available in a range of colours and finishes Aluminium and stainless steel* *Subject to quantities available |
| Joints | Clip-lock (tongue & groove), Cam-lock system (tongue & groove), Semi cam-lock system (tongue & groove) |
| Sealants | Non-setting butyl / polysulphide / silicone |

Solutions For Your Cold Storage Needs

COO POINT panels are manufactured by injecting high pressure polyurethane (PU) foam between two steel skins in a tightly enclosed cavity. The panels are designed for quick cold room assembly and can be easily joined via an embedded tongue-and-groove system (CAM LOCK TECHNOLOGY) for a secure fit.

In addition to our standard production line series, our cold storage rooms can be designed, customized and configured according to dimensions, forms and sizes requested.

Applications

- Chiller & freezer rooms-fresh / frozen food
- Controlled atmosphere rooms
- Food processing rooms
- Production rooms
- Clean rooms
- Pharmaceutical storage rooms
- Warehouses
- Cross-docking facilities



Refrigeration Systems

We are committed to providing customized solutions to suit the specific environments and load demands of our cold rooms. A range of services are available to our customers to assist them in the design and application of their projects.



Services and Support



Our experienced team at COOL POINT, offers a range of comprehensive advisory services.

We have a professional advisory service and consulting team with extensive local and international experience. Our team will assist our customers to coordinate a project from conception through final completion.

Consultancy

Our team of cold room specialists will review and assess our customer's requirements and needs.

Site Survey

A site survey is typically conducted to determine feasibility and suitability of initial proposal.

Design

Our team of trained engineers and draftsmen will compute all the technical data, design and provide layout plans/drawings on the proposed cold room.

Installation

Trained workmen will be on site to assemble customer's cold room.

Commissioning

Refrigeration systems will be tuned and tested.

Handover

Finalization and handover of project to project owner.

Service & Maintenance

Periodic service and maintenance.



REEFER CONTAINERS

Cool Point (Pvt.) Ltd. Introduces New Range of Light Weight Refrigerated Containers

Evaporator Technology

This system is suitable for chilled food items. It provides continuous cooling as long as truck engine is ON because compressor is driven by engine. Inside unit is evaporator with fan coil arrangement which provides continuous monitoring and central of temperature inside the cabin of the container.

Specifications

Temperature Range: +10 °C to -20 °C

Compressor Type: Automotive direct drive from engine.

Indoor Cooling Unit: High speed fans runs on truck battery and cooling coil with fin & tube arrangement.

Control: Microprocessor based temperature central and monitor with defrost timer. This unit is installed in drivers cabin for real time monitoring of temperature.

Defrost Circuit: Hot gas defrost circuit controlled through solenoid valve.

Sizes Available: Length 197", Width 85", Height 87", suitable for Mazda or Hino Truck
Length 118", Width 67", Height 71" suitable for Shahzor Truck

Insulation Properties: 5" thick polyurethane injected @ 45 Kg/m³ sandwich panel with fiber glass light weight material.

Gas Kits: 4 steps gasket in doors.

Power Supply: Powered by Landline (WAPDA) / Truck Engine

Eutectic Technology

These systems are specially designed for ice cream and frozen foods. The system turns ON during OFF road conditions and system achieve -35 °C temperature in 10 hrs. Once the cool tube i.e. Eutectic tubes cooled they maintain their temperature for 72-hrs.

Specifications

Temperature Range: +10 °C to -40 °C

Compressor Type: Sami Sealed Hermetic Compressor directly operated by electricity.

Eutectic Tubes: Filled with eutectic solution suitable for food items.

Control: Microprocessor based temperature central and monitor with defrost timer. This unit is installed in drivers cabin for real time monitoring of temperature.

Sizes Available: Length 197", Width 85", Height 87", suitable for Mazda or Hino Truck
Length 118", Width 67", Height 71" suitable for Shahzor Truck

Insulation Properties: 6" thick polyurethane injected @ 45 Kg/m³ sandwich panel with fiber glass light weight material.

Gas Kits: 5 steps gasket in doors.

Power Supply: Powered by Landline (WAPDA)



Lahore Office:

Adda Plot, Sharaiz Avenue,
Jatti Umra Road,
Raiwind Road, Lahore.
Ph: 0092-42-35322612-7
Fax: 0092-42-35322618
Email: info@coolpoint.net.pk
URL: www.coolpoint.net.pk

Islamabad Office:

Office No. 11, 1st Floor,
Zaki Center, I-8 Markaz,
Islamabad.
Ph: 051-4861371
Fax: 051-4861372
Email: isboffice@coolpoint.net.pk
URL: www.coolpoint.net.pk

Karachi Office:

Office No. 201-A, 2nd Floor,
Plot No. DC-4, Clifton Center,
Clifton Block No. 5, Karachi.
Ph: 021-5810981, 5810982
Fax: 021-5821219
Email: khioffice@coolpoint.net.pk
URL: www.coolpoint.net.pk